

PALMA SOLA TRACE COMMUNITY DEVELOPMENT DISTRICT

DISTRICT OFFICE · 3434 COLWELL AVENUE · SUITE 200 · TAMPA, FLORIDA 33614

PALMA SOLA TRACE COMMUNITY DEVELOPMENT DISTRICT

**BOARD OF SUPERVISORS' MEETING
OCTOBER 25, 2012**

**PALMA SOLA TRACE
COMMUNITY DEVELOPMENT DISTRICT
AGENDA
OCTOBER 25, 2012 at 1:30 p.m.**

Palma Sola Trace Clubhouse
7408 Hamilton Road
Bradenton, FL 34209

District Board of Supervisors	Mac McCraw Peter Gelman Michelle Campbell James Fleming Dutch Neuweiler	Chairman Vice Chairman Assistant Secretary Assistant Secretary Assistant Secretary
District Manager	Greg Cox	Rizzetta & Company, Inc.
District Attorney	Jere Earlywine	Hopping Green & Sams, P.A.
District Engineer	Rick Schappacher	Schappacher Engineering

All Cellular phones and pagers must be turned off while in the meeting room.

The District Agenda is comprised of four different sections:

The meeting will begin promptly at **1:30 p.m.** with the first section which is called **Business Administration**. The Business Administration section contains items that require the review and approval of the District Board of Supervisors as a normal course of business. The second section is called **Business Items**. The business items section contains items for approval by the District Board of Supervisors that may require discussion, motion and votes on an item-by-item basis. If any member of the audience would like to speak on one of the business items, they will need to register with the District Manager prior to the presentation of that agenda item. Occasionally, certain items for decision within this section are required by Florida Statute to be held as a Public Hearing. During the Public Hearing portion of the agenda item, each member of the public will be permitted to provide one comment on the issue, prior to the Board of Supervisors' discussion, motion and vote. Agendas can be reviewed by contacting the Manager's office at (813) 933-5571 at least seven days in advance of the scheduled meeting. Requests to place items on the agenda must be submitted in writing with an explanation to the District Manager at least fourteen (14) days prior to the date of the meeting. The third section is called **Staff Reports**. This section allows the District Manager, Engineer, and Attorney to update the Board of Supervisors on any pending issues that are being researched for Board action. The final section is called **Supervisor Requests and Audience Comments**. This is the section in which the Supervisors may request Staff to prepare certain items in an effort to meet residential needs. The Audience Comment portion of the agenda is where individuals may comment on matters that concern the District. Each individual is limited to three **(3) minutes** for such comment. The Board of Supervisors or Staff is not obligated to provide a response until sufficient time for research or action is warranted. **IF THE COMMENT CONCERNS A MAINTENANCE RELATED ITEM, THE ITEM WILL NEED TO BE ADDRESSED BY THE DISTRICT MANAGER OUTSIDE THE CONTEXT OF THIS MEETING.**

Public workshops sessions may be advertised and held in an effort to provide informational services. These sessions allow staff or consultants to discuss a policy or business matter in a more informal manner and allow for lengthy presentations prior to scheduling the item for approval. Typically no motions or votes are made during these sessions.

Pursuant to provisions of the Americans with Disabilities Act, any person requiring special accommodations to participate in this meeting is asked to advise the District Office at (813) 933-5571, at least 48 hours before the meeting. If you are hearing or speech impaired, please contact the Florida Relay Service at 1 (800) 955-8770, who can aid you in contacting the District Office.

Any person who decides to appeal any decision made by the Board with respect to any matter considered at the meeting is advised that this same person will need a record of the proceedings and that accordingly, the person may need to ensure that a verbatim record of the proceedings is made, including the testimony and evidence upon which the appeal is to be based.

October 17, 2012

Board of Supervisors
Palma Sola Trace Community
Development District

AGENDA

Dear Board Members:

The regular meeting of the Board of Supervisors of Palma Sola Trace Community Development District will be held on **Thursday, October 25, 2012 at 1:30 p.m.** at the Palma Sola Trace Clubhouse located at 7408 Hamilton Road, Bradenton, FL 34209. The following is the agenda for this meeting:

- 1. CALL TO ORDER**
- 2. BUSINESS ADMINISTRATION**
 - A. Consideration of Minutes of the Board of Supervisors' Meeting held on August 23, 2012.....Tab 1
 - B. Consideration of Operation & Maintenance Expenditures for August and September 2012Tab 2
- 3. BUSINESS ITEMS**
 - A. Monthly Updates
 1. Street Light Update
 2. Pond Maintenance UpdateTab 3
 3. Creek Maintenance Update
 - B. Discussion Regarding Pond Repairs
 - C. Presentation of Unaudited District Financial Statement
 - D. Review of Action Item List
- 4. STAFF REPORTS**
 - A. District Counsel
 - B. District Engineer
 - C. District Manager
- 5. SUPERVISOR REQUESTS AND AUDIENCE COMMENTS**
- 6. ADJOURNMENT**

I look forward to seeing you at the meeting. In the meantime, if you have any questions, please do not hesitate to contact me at (813) 933-5571.

Very truly yours,


Greg Cox
District Manager

Tab 1

MINUTES OF MEETING

Each person who decides to appeal any decision made by the Board with respect to any matter considered at the meeting is advised that the person may need to ensure that a verbatim record of the proceedings is made, including the testimony and evidence upon which such appeal is to be based.

**PALMA SOLA TRACE
COMMUNITY DEVELOPMENT DISTRICT**

The regular meeting and public hearing of the Board of Supervisors of the Palma Sola Trace Community Development District was held on Thursday, August 23, 2012 at 1:38 p.m. at the Palma Sola Trace Clubhouse located at 7408 Hamilton Road, Bradenton, FL 34209.

Present and constituting a quorum:

Mac McCraw	Board Supervisor, Chairman
Peter Gelman	Board Supervisor, Vice Chairman
James Fleming	Board Supervisor, Assistant Secretary

Also present were:

Greg Cox	District Manager; Rizzetta & Company, Inc.
Jere Earlywine	District Counsel; Hopping Green & Sams, P.A.

Audience

FIRST ORDER OF BUSINESS

Call to Order

Mr. Cox called the meeting to order and read the roll call.

SECOND ORDER OF BUSINESS

**Consideration of Minutes of the Board of
Supervisors' Meeting Held June 28, 2012**

Mr. Cox presented the minutes of the Board of Supervisors' meeting held on June 28, 2012 to the Board for consideration.

On a Motion by Mr. Fleming, seconded by Mr. Gelman, with all in favor, the Board approved the Minutes of the Board of Supervisors' Meeting held on June 28, 2012 as presented for Palma Sola Trace Community Development District.

THIRD ORDER OF BUSINESS

**Consideration of Operation &
Maintenance Expenditures for June and
July 2012**

Mr. Cox presented the Operation and Maintenance expenditures for June 2012 totaling \$15,194.44 and July 2012 totaling \$16,809.89 to the Board for consideration.

On a Motion by Mr. Gelman, seconded by Mr. Fleming, with all in favor, the Board approved the Operation and Maintenance expenditures for June 2012 totaling \$15,194.44 and July 2012 totaling \$16,809.89 for Palma Sola Trace Community Development District.

FOURTH ORDER OF BUSINESS

Street Light Update

Mr. Cox stated he had nothing unique to report but advised he and Mr. Gelman had done a thorough walk-through inspection of the community and they studied the streetlight issue in depth. In Mr. Cox's opinion the reasons for the base paint coming off is a combination of sunlight, possibly irrigation, and landscaping. Mr. Gelman suggested that Bellmore Electric check all the lights and tighten up any loose globes and such. Mr. Cox will also contact the landscape company to trim up any tree limbs/fronds from around the lights.

FIFTH ORDER OF BUSINESS

Pond Maintenance Update

Mr. Cox said he has communicated with Mike Kaighin of Aquagenix who reported that everything is looking good. Mr. Cox asked him about the aquatic plantings and Mike replied that some are doing well while others are not. Mr. Gelman advised the warranty on the plantings expired at the end of June and said it is time to set up an inspection with Mike to determine the warranty coverage and replacement of the plants. Mr. Gelman said he can meet with Mike on-site next week and asked Mr. Cox to set up an appointment.

SIXTH ORDER OF BUSINESS

Creek Maintenance Update

Mr. Cox advised there were no items of major significance to report. The mitered end section has been cleared out and a fallen palm tree was removed. A homeowner, Angela, asked about clearing out of weeds and stated it appears that the grass was killed along with the weeds and that the workers were trampling and killing the plants (canna lilies) there as well.

SEVENTH ORDER OF BUSINESS

Consideration of District Engineer Qualifications Proposals

Mr. Cox presented three District Engineer proposals received in response to the District's request for qualifications. The companies that submitted proposals were King Engineering, Schappacher Engineering, and ZNS Engineering. Mr. Earlywine briefly reviewed the process and criteria of the RFQ. Mr. Cox asked each Supervisor to rank his choices in order before voting. King Engineering received 3 third-place votes; Schappacher Engineering received 2 first-place votes (Mr. Fleming, Mr. Gelman) and 1 second-place vote (Mr. McCraw); and ZNS received 2 second-place votes (Mr. Fleming, Mr. Gelman) and 1 first-place vote (Mr. McCraw).

On a Motion by Mr. Fleming, seconded by Mr. Gelman, with all in favor, the Board adopted the rankings of the District Engineer proposals as scored and authorized staff to negotiate a contract with the first-ranked contractor, Schappacher Engineering, for Palma Sola Trace Community Development District.

EIGHTH ORDER OF BUSINESS

Discussion Regarding Pond Repairs

Mr. Cox introduced discussion of repairs to pond #4. Mr. Gelman stated he would get a price from the District engineer, who would then get an estimate from the contractor(s), and recommended installation of a rock plug which will stabilize the bank and hopefully the vegetation can be saved as well or else it can just be moved over. Mr. Gelman said he would like to put on the table that the repairs were not caused randomly but that they have tried without success to repair the area three times the way it was designed and asked Mr. McCraw if, as a contractor, should the community pay for those repairs when someone could say it wasn't done (designed) right in the first place? Mr. McCraw said he's tried to bring these things up at their meetings and said this whole drainage system and all of the improvements were accepted by the CDD for maintenance and management many [six] years ago, and there is a need to maintain and work through these issues that come up with infrastructure. He has no idea if it is due to a defect or not but in his opinion these things happen and the CDD is well-funded to correct these problems so he doesn't think there is anything the developer needed to do to fix the problems. Mr. Gelman said he doesn't want to debate the issue too much but he thinks it is debatable because the CDD's engineer who accepted the system and all of the structures and gave his conclusion of acceptance was King Engineering, who is the developer's engineer. Mr. Gelman said he doesn't want to be argumentative, he just wants it noted in the minutes of the meeting for future record. Mr. Fleming stated it was a really poor design, and maybe the design wasn't all that poor but the implementation of the grid was and there was no oversight at all in that pond #8 drainage on the southeast corner. It failed three times and was repaired the first two times exactly as if the previous failure had not occurred, and it failed again, and personally that was one of the reasons he would not consider King Engineering for the District engineer contract. Mr. Fleming said he blames King Engineering more than he does Taylor Morrison. Mr. McCraw said the drain design was implemented and then two new houses were built next door to the pond which could affect the drainage which goes around that pipe; there are many factors which could affect it. Mr. Gelman agreed but all of those things were done under control of the developer – the houses being built, the grading being done, the types of backflows being used.

NINTH ORDER OF BUSINESS

**Consideration of Resolution 2012-02,
Declaring Vacancies on the Board**

Mr. Cox presented Resolution 2012-02 to the Board for consideration and explained to the Board the necessity of the resolution. Brief general discussion ensued.

On a Motion by Mr. Gelman, seconded by Mr. Fleming, with all in favor, the Board approved Resolution 2012-02, Declaring Vacancies on the Board of Supervisors, for Palma Sola Trace Community Development District.

TENTH ORDER OF BUSINESS

**Presentation of Unaudited Financial
Summary**

Mr. Cox presented and reviewed the latest unaudited financial summary for the Board. General discussion ensued.

ELEVENTH ORDER OF BUSINESS

**Public Hearing on Adoption of Fiscal
Year 2012/2013 Final Budget**

On a Motion by Mr. Gelman, seconded by Mr. Fleming, with all in favor, the Board opened the public hearing on Adoption of Fiscal Year 2012/2013 Final Budget for Palma Sola Trace Community Development District.

Mr. Cox opened the floor to audience comments and questions. There were none.

TWELFTH ORDER OF BUSINESS

**Consideration of Resolution 2012-03,
Adopting Fiscal Year 2012/2013 Final
Budget**

Mr. Cox presented Resolution 2012-03 to the Board for consideration.

On a Motion by Mr. Gelman, seconded by Mr. Fleming, with all in favor, the Board approved Resolution 2012-03, Adopting Fiscal Year 2012/2013 Final Budget, for Palma Sola Trace Community Development District.

On a Motion by Mr. Fleming, seconded by Mr. Gelman, with all in favor, the Board closed the public hearing portion of the meeting for Palma Sola Trace Community Development District.

THIRTEENTH ORDER OF BUSINESS

**Consideration of Resolution 2012-04,
Imposing Special Assessments and
Certifying an Assessment Roll**

Mr. Cox presented Resolution 2012-04 to the Board for consideration.

On a Motion by Mr. Gelman, seconded by Mr. Fleming, with all in favor, the Board approved Resolution 2012-04, Imposing Special Assessments and Certifying an Assessment Roll, for Palma Sola Trace Community Development District.

FOURTEENTH ORDER OF BUSINESS

**Consideration of Resolution 2012-05,
Adopting Fiscal Year 2012/2013 Annual
Meeting Schedule**

Mr. Cox presented Resolution 2012-05 to the Board for consideration. Discussion ensued. The Board decided to keep the same day and time but chose to have eight meetings. It was agreed to skip every third meeting, deleting the months of December, March, June and September from the schedule.

On a Motion by Mr. Fleming, seconded by Mr. Gelman, with all in favor, the Board approved Resolution 2012-05, Adopting Fiscal Year 2012/2013 Annual Meeting Schedule, for Palma Sola Trace Community Development District.

FIFTEENTH ORDER OF BUSINESS

Review of Action Item List

Mr. Cox presented the latest action item list and reviewed with the Board any ongoing and completed tasks not already discussed during the meeting. Discussion ensued.

SIXTEENTH ORDER OF BUSINESS

Staff Reports

A. District Counsel

No additional information was presented.

B. District Engineer

Not present; no report given.

C. District Manager

Mr. Cox stated the next regular meeting will be held October 25th at 1:30 p.m.

SEVENTEENTH ORDER OF BUSINESS

Supervisor Requests and Audience Comments

Supervisor Requests:

Mr. Gelman discussed the deferred cost letter. He asked how much money is to be paid in deferred cost to the developer each year and for how many years, and asked about the replacement schedule and who decided on it. Mr. Earlywine explained the process. Mr. Gelman also inquired about a construction requisition for streetlights.

Audience Comments:

One audience member commented on the state of a homeowner's lawn in the community.

EIGHTEENTH ORDER OF BUSINESS

Adjournment

On a Motion by Mr. Fleming, seconded by Mr. Gelman, with all in favor, the Board adjourned the Board of Supervisors' Meeting at 3:21 p.m. for the Palma Sola Trace Community Development District.

Secretary / Assistant Secretary

Chairman / Vice Chairman

Tab 2

PALMA SOLA TRACE COMMUNITY DEVELOPMENT DISTRICT

DISTRICT OFFICE • 3434 COLWELL AVENUE • SUITE 200 • TAMPA, FLORIDA 33614

Operation and Maintenance Expenditures August 2012 For Board Approval

Attached please find the check register listing the Operation and Maintenance expenditures paid from August 1, 2012 through August 31, 2012. This does not include expenditures previously approved by the Board.

The total items being presented: **\$21,821.84**

Approval of Expenditures:

_____ Chairman

_____ Vice Chairman

_____ Assistant Secretary

Palma Sola Trace Community Development District
Paid Operation & Maintenance Expenses
 August 1, 2012 Through August 31, 2012

<u>Vendor Name</u>	<u>Check Number</u>	<u>Invoice Number</u>	<u>Invoice Description</u>	<u>Invoice Amount</u>
Aquagenix	2088	1168540	Aquatic Service 08/12	\$ 850.00
Bellmore Electric Inc.	2081	5696	Troubleshoot Light #32	\$ 975.00
Bellmore Electric Inc.	2081	5697	250 Watt M/H Bulb #34	\$ 95.00
Bellmore Electric Inc.	2089	5717	Street Light Repairs	\$ 440.00
Bradenton Herald	2085	Order #052096080	Acct # 001447100 Legal Advertising 07/15/12	\$ 288.00
ECo Consultants Inc.	2090	10845	Bi-Monthly Maintenance of Canal Area 07/12	\$ 1,800.00
Florida Power & Light Company	2086	21937-71157 07/12	3724 Summerwind Cir # GATE 07/12	\$ 8.63
Florida Power & Light Company	2086	75654-55537 07/12	3807 75th St W # ST LTS 07/12	\$ 720.64
Florida Power & Light Company	2086	84373-03152 07/12	4095 Overture Cir # GATE 07/12	\$ 23.22
Hopping Green & Sams	2082	66060	General/Monthly Legal Services 06/12	\$ 1,582.13
Hopping Green & Sams	2093	66407	General/Monthly Legal Services 07/12	\$ 2,262.56
J-C Pipeline Inc.	2083	2012-0725-05	Rainforest Court-Mitered End Repair	\$ 3,150.00
J-C Pipeline Inc.	2083	2012-0725-06	Rainforest Court-Remodel Junction Box	\$ 4,380.00
James D. Fleming	2091	JF082312	Board of Supervisors Meeting 08/23/12	\$ 200.00
Pyotr Gelman	2092	PG082312	Board of Supervisors Meeting 08/23/12	\$ 200.00
Rizzetta & Company, Inc.	2084	14237	District Management Fees 08/12	\$ 3,666.66
Schappacher Engineering, LLC	2087	S13255	Engineering Services 07/12	\$ 500.00
West Bay Landscape, Inc.	2094	30572	Monthly Lawn Service 08/12	\$ 680.00
Report Total				\$ <u>21,821.84</u>



Remit To:
 100 N Conahan Drive
 Hazleton, PA 18201
 904-262-2001 FAX 904-262-0010
 www.dbiservices.com/aquagenix

Invoice

Number
 1168540

Date
 01-AUG-12

Customer PO

Cust # 13801

Palma Sola Trace CDD
 c/o Rizzetta & Company, Inc.
 3434 Colwell Ave
 Tampa FL 33614

Referral.
 Palma Sola Trace
 CDD

Quantity	Description	Unit Price	Amount
1	Aquatics Service <i>08/12</i>	850.00	\$850.00
	<i>lp 8/15/12</i> AUG 13 2012 <i>001 53800 4610</i>		
		Subtotal	\$850.00
		Tax	\$0.00
TERMS -NET30: A Service Charge of 1 1/2% Per Month Is Charged on Past Due Accounts (Annual Rate 18%)		Total	\$850.00

Central Florida Branch Office
 St. Cloud, FL
 (407) 892-0136

Southeast Florida Branch Office
 Fort Lauderdale, FL
 (954) 943-5118

West Central Florida Branch
 Office
 Sarasota, FL
 (941) 371-8081

Southwest Florida Branch Office
 Ft. Myers, FL
 (239) 561-1420

West Palm/Treasure Coast Office
 West Palm Beach, FL
 (561) 881-1291

Tampa Bay Area Branch Office
 Tampa, FL
 (813) 627-8710

North Florida Branch Office
 Jacksonville, FL
 (904) 262-2001

Carolinas Branch Office
 Myrtle Beach, SC
 (843) 651-9220

Bellmore Electric Inc.
 4557 abacos Pl.
 Bradenton Fl. 34203
 (941) 779-6148
 Fax (941) 727-1958
 EC13004201

Invoice

Date	Invoice #
7/27/2012	5696

Bill To
 Palma Sola Trace CDD
 3434 COLWELL AVE, SUITE 200
 TAMPA, FL. 33614

Project	Terms
STREET LIGHT # 32	Due on receipt

Description	Amount	Quantity	Total
SCOPE OF WORK TROUBLE SHOOT LIGHT # 32 NOT WORKING. WITH THE USE OF FAULT MACHINE I WAS ABLE TO FIND MULTIPLE CUTS IN DIRECT BURIED LINE THAT FEEDS LIGHT. DIG TRENCH FROM DISCONNECT TO LIGHT # 32 AND INSTALL 3/4" PVC PIPE. INSTALL HAND HOLES AT EACH SIDE OF DRIVE WAY AND ONE AT DISCONNECT FOR MAKING CONNECTIONS. PULL IN # 10 THHN COPPER WIRE FROM DISCONNECT TO LIGHT POLE. 50' 3/4" PVC CONDUIT 3- ROUND HAND HOLES 150' # 10 THHN COPPER THHN USE OF FAULT MACHINE	875.00		875.00
RECEIVED Date Rec'd Rizzetta & Co., Inc. <u>AUG 06 2012</u> D/M approval <u>[Signature]</u> Date <u>8/8/12</u> Date entered <u>AUG 07 2012</u> Fund <u>001</u> GL <u>54100004613</u> Check # _____	100.00		100.00
Thank you for your business.	Total		\$975.00

Bellmore Electric Inc.
 4557 abacos Pl.
 Bradenton Fl. 34203
 (941) 779-6148
 Fax (941) 727-1958
 EC13004201

Invoice

Date	Invoice #
7/27/2012	5697

Bill To

Palma Sola Trace CDD
 3434 COLWELL AVE, SUITE 200
 TAMPA, FL. 33614

Project	Terms
STREET LIGHTS	Due on receipt

Description	Amount	Quantity	Total
250 WATT M/H BULB #34	30.00	1	30.00
HOURLY RATE	65.00	1	65.00
<p style="text-align: right;">RECEIVED</p> <p style="text-align: right;">AUG 06 2012</p> <p>Date Rec'd Rizzetta & Co., Inc. _____</p> <p>D/M approval <u>gl</u> Date <u>8/0/12</u></p> <p>Date entered <u>AUG 07 2012</u></p> <p>Fund <u>001</u> GL <u>54100</u> OC <u>4613</u></p> <p>Check # _____</p>			
Thank you for your business.	Total		\$95.00

Bellmore Electric Inc.
 4557 abacos Pl.
 Bradenton Fl. 34203
 (941) 779-6148
 Fax (941) 727-1958
 EC13004201

Invoice

Date	Invoice #
8/21/2012	5717

Bill To
 Palma Sola Trace CDD
 3434 COLWELL AVE, SUITE 200
 TAMPA, FL. 33614

Project	Terms
STREET LIGHT REPAIRS	Due on receipt

Description	Amount	Quantity	Total
REPLACE BALLAST, BULB AND PHOTO EYE 250 WATT M/H	220.00	2	440.00
<p style="text-align: right;">RECEIVED</p> <p style="text-align: right;">AUG 21 2012</p> <p>Date Rec'd Rizzetta & Co., Inc. _____</p> <p>D/M approval <u>ge</u> Date <u>8/22/12</u></p> <p>Date entered <u>AUG 23 2012</u></p> <p>Fund <u>001</u> <u>GL 54100</u> <u>OC 4613</u></p> <p>Check # _____</p>			

Thank you for your business. **Total** \$440.00

BRADENTON HERALD

Manatee County's Newspaper since 1922

ADVERTISING INVOICE STATEMENT

PLEASE RETURN TOP PORTION WITH YOUR PAYMENT

P.O. Box 921
BRADENTON, FL 34206-0921

M
PAGE: 1

ACCOUNT: 001447100
PERIOD: 07/01/12 07/31/12 REP: 18

TERMS:
NET 20 DAYS

PALMA SOLA TRACE CDD
ATTN: ACCTS PAYABLE
3434 COLWELL AVE STE 200
TAMPA FL 33614

CURRENT BALANCE: \$288.00
PLEASE MAKE CHECK PAYABLE TO: AMOUNT ENCLOSED
BRADENTON HERALD

001447100 000000000000000000 000288008

REFERENCE NUMBER DATE STARTED	END DATE TIMES RUN	DESCRIPTION OR TAG LINE AD DIMENSION	RATE	SIZE	CHARGES OR CREDITS
BALANCE FORWARD					.00
T052096080 07/15/12	07/15/12 2	REQUEST FOR QUALIFICAT 1.0X 120.00L		120.0L	288.00 288.00
		PREVIOUS AMOUNT OWED:			.00
		NEW CHARGES THIS PERIOD:	288.00		
		NEW TAXES THIS PERIOD:			.00
		PAYMENT THIS PERIOD:			.00
		DEBIT ADJUSTMENTS THIS PERIOD:			.00
		CREDIT ADJUSTMENTS THIS PERIOD:			.00

BILLING INQUIREIES: 941-745-7069
AD SALES: CLASSIFIED 941-748-4400
AD SALES: RETAIL 941-748-0411, EST 7030

gr *8/15/12*
 AUG 13 2012
001 51300 4801

TOTAL AMOUNT IS DUE BY THE 20TH OF THE MONTH

\$288.00	\$0.00	\$0.00	\$0.00
CURRENT	OVER-30	OVER-60	OVER-90

Total Due: \$288.00

001447100
PALMA SOLA TRACE CDD

BRADENTON HERALD

Manatee County's Newspaper since 1922

102 MANATEE AVE W
P.O. BOX 921
BRADENTON, FL 34206-0921

THANK YOU FOR PLACING
YOUR ADS WITH US



Invoice

1523 8th Ave. W, Suite B, Palmetto, FL 34221
 Telephone 941.722.0901 Fax 941.722.4931
 Email: Accounting@ecoconsultants.net

Date	Invoice #
8/21/2012	10845

Bill To
Palma Sola Trace CDD Attn: Accounts Payable C/O Rizetta & Company 3434 Colwell Avenue Suite 200 Tampa, FL 33614

Terms	Project
Due on receipt	Palma Sola Trace

Date	Description	Qty	Rate	Amount
7/26/2012	Palma Sola Trace CDD: Bi - Monthly Maintenance of Canal - Palma Sola Trace CDD Ditch Maintenance Herbicide and Manual Treatment of Nuisance Vegetation	1	1,800.00	1,800.00

RECEIVED
 AUG 23 2012

Rec'd Rizetta & Co. Inc.
 Approved: *gl* Date: 8/21/12
 AUG 28 2012
 001 53800 4607

Thank you for your business.	Total	\$1,800.00
	Balance Due	\$1,800.00

Please request changes on the back.
 Notes on the front will not be detected.

B 5,8 5205 1



AUTO **CO 1459
 1 160276

PALMA SOLA
 TRACE CDD
 3434 COLWELL AVE STE 200
 TAMPA FL 33614-8390

Make check payable to FPL in U.S. funds
 and mail along with this coupon to:

FPL
 GENERAL MAIL FACILITY
 MIAMI FL 33188-0001



Account number	Total amount you owe	New charges due by	Amount enclosed
21937-71157	\$8.63	Aug 28 2012	\$

Your electric statement

Account number: 21937-71157

For: Jul 09 2012 to Aug 07 2012 (29 days)

Customer name: PALMA SOLA

Statement date: Aug 07 2012

Service address: 3724 SUMMERWIND CIR # GATE

Next meter reading: Sep 07 2012

Amount of your last bill	Payments (-)	Additional activity (+ or -)	Balance before new charges (=)	New charges (+)	Total amount you owe (=)	New charges due by
8.83	8.83 CR	0.00	0.00	8.63	\$8.63	Aug 28 2012

Meter reading - Meter 7C83032

Current reading 00785
 Previous reading - 00774
 kWh used 11

Amount of your last bill 8.83
 Payment received - Thank you 8.83 CR
 Balance before new charges \$0.00

Energy usage

	Last Year	This Year
kWh this month	17	11
Service days	28	29
kWh per day	1	0

New charges (Rate: GS-1 GENERAL SVC NON-DEMAND / BUSINESS)
 Electric service amount 7.93**
 Storm charge 0.01
 Gross receipts tax 0.20
 Franchise charge 0.49
 Total new charges \$8.63

****The electric service amount includes the following charges:**

Customer charge: \$6.89
 Fuel: \$0.41
 (\$0.036880 per kWh)
 Non-fuel: \$0.63
 (\$0.056620 per kWh)

Total amount you owe \$8.63

- Payment received after **October 29, 2012** is considered **LATE**; a late payment charge of 1% will apply.

Handwritten notes and signatures:
 AUG 13 2012
 001 53100 4301

3 160276

August 7, 2012

PALMA SOLA
TRACE CDD
3434 COLWELL AVE STE 200
TAMPA FL 33614-8390

RE: - 3724 SUMMERWIND CIR # GATE

Dear Valued Customer:

Please be advised the Florida Public Service Commission recently amended interest rates on deposits to be in-line with current market rates. Therefore, as of July 26, 2012, deposits currently earning 6% interest will earn 2% and deposits currently earning 7% interest will earn 3%.

For information about our deposit policies, visit www.FPL.com/businessdeposits. You can also log in to your account at www.FPL.com for information about your deposit. Your deposit amount will be located in the "Account Information" area, and if you click on "Learn More," you can view the interest rate that you are receiving.

We truly value your business and are committed to providing you with affordable, reliable and clean energy now and in the future. If you have any questions, please call our Business Care Center at (800) 375-2434.

Sincerely,

FPL Customer Service

USEFUL TELEPHONE NUMBERS



Please request changes on the back.
 Notes on the front will not be detected.

A A 5,8

5202 1



AUTO **C0 1459
 1 150849

PALMA SOLA TRACE COMM DEV
 DISTRICT
 3434 COLWELL AVE STE 200
 TAMPA FL 33614-8390

Make check payable to FPL in U.S. funds
 and mail along with this coupon to:

FPL
 GENERAL MAIL FACILITY
 MIAMI FL 33188-0001



Account number	Total amount you owe	New charges due by	Amount enclosed
75654-55537	\$720.64	Aug 23 2012	\$

Your electric statement

Account number: 75654-55537

For: Jul 03 2012 to Aug 02 2012 (30 days)

Customer name: PALMA SOLA TRACE COMM DEV
 Service address: 3807 75TH ST W # ST LTS

Statement date: Aug 02 2012
 Next bill date: Sep 04 2012

Amount of your last bill	Payments (-)	Additional activity (+ or -)	Balance before new charges (=)	New charges (+)	Total amount you owe (=)	New charges due by
720.64	720.64 CR	0.00	0.00	720.64	\$720.64	Aug 23 2012

Total kWh used 9991

Energy usage

	Last Year	This Year
kWh this month	9991	9991
Service days	28	30
kWh per day	357	333

Amount of your last bill	720.64
Payment received - Thank you	720.64 CR
Balance before new charges	\$0.00

New charges (Rate: SL-1 STREET LIGHTING SERVICE)

Electric service amount	626.99**
Storm charge	75.63
Gross receipts tax	18.02
Total new charges	\$720.64

****The electric service amount includes the following charges:**

Non-fuel energy charge: \$0.030380 per kWh
 Fuel charge: \$0.032400 per kWh

Total amount you owe \$720.64

- Payment received after **October 23, 2012** is considered **LATE**; a late payment charge of **1%** will apply.
- Charges and energy usage are based on the facilities contracted. Facility, energy and fuel costs are available upon request.

Handwritten notes and stamps:
 8/15/12
 AUG 13 2012
 001 53100 4307

2 150849

Detail of Rate Schedule Charges for
 Street Lights

5202 000320

PALMA SOLA TRACE COMM DEV
 DISTRICT
 3434 COLWELL AVE STE 200
 TAMPA FL 33614-8390

Account Number: 75654-55537
 Service From: 07-03-2012
 Service To: 08-02-2012
 Service Days: 30
 KWH/Day: 333

Service Address: 3807 75TH ST W # ST LTS, BRADENTON FL 34209

COMPONENT CODE	WATTS	LUMENS	* OWNER/ MAINT	QUANTITY	RATE/ UNIT	KWH USED	AMOUNT
103 KWH Energy			E	97	2.800000	9,991	271.60
Energy sub total							271.60
Sub total						9,991	271.60
Energy conservation cost recovery							14.89
Capacity payment recovery charge							12.89
Environmental cost recovery charge							3.90
Storm charge							75.63
Fuel charge							323.71
Electric service amount							702.62
Gross receipts tax							18.02
Total						9,991	720.64

* F - FPL OWNS & MAINTAINS E - CUSTOMER OWNS & MAINTAINS R - CUSTOMER OWNS, FPL RELAMPS

Florida Power & Light Company
 P.O. Box 62076
 Tampa, FL 33662

2 160276 / 27

520584373031527223200000

Please request changes on the back.
 Notes on the front will not be detected.

B 5,8 5205 7

PALMA SOLA
 TRACE CDD
 3434 COLWELL AVE STE 200
 TAMPA FL 33614-8390

Make check payable to FPL in U.S. funds
 and mail along with this coupon to:

FPL
 GENERAL MAIL FACILITY
 MIAMI FL 33188-0001

Account number	Total amount you owe	New charges due by	Amount enclosed
84373-03152	\$23.22	Aug 28 2012	\$

Your electric statement

Account number: 84373-03152

For: Jul 09 2012 to Aug 07 2012 (29 days)

Customer name: PALMA SOLA
 Service address: 4095 OVERTURE CIR # GATE

Statement date: Aug 07 2012
 Next meter reading: Sep 07 2012

Amount of your last bill	Payments (-)	Additional activity (+ or -)	Balance before new charges (=)	New charges (+)	Total amount you owe (=)	New charges due by
24.88	24.88 CR	0.00	0.00	23.22	\$23.22	Aug 28 2012

Meter reading - Meter 7C83024

Current reading 06696
 Previous reading - 06543
 kWh used 153

Amount of your last bill 24.88
 Payment received - Thank you 24.88 CR
 Balance before new charges \$0.00

Energy usage

	Last Year	This Year
kWh this month	150	153
Service days	28	29
kWh per day	5	5

New charges (Rate: GS-1 GENERAL SVC NON-DEMAND / BUSINESS)

Electric service amount	21.20**
Storm charge	0.16
Gross receipts tax	0.55
Franchise charge	1.31
Total new charges	\$23.22

****The electric service amount includes the following charges:**

Customer charge: \$6.89
 Fuel: \$5.64
 Non-fuel: \$8.87
 (\$0.036880 per kWh)
 (\$0.056620 per kWh)

Total amount you owe \$23.22

- Payment received after **October 29, 2012** is considered **LATE**; a late payment charge of 1% will apply.

ge 8/15/12
 AUG 13 2012
 001 53100 4301

Florida Power & Light Company
 P.O. Box 62076
 Tampa, FL 33662

Please have your account number ready when contacting FPL.
 Customer service: 1-800-375-2434
 Outside Florida: 1-800-226-3545
 To report power outages: 1-800-4OUTAGE (468-8243)
 Hearing/speech impaired: 711 (Relay Service)
 Online at: www.FPL.com

4 160276

August 7, 2012

PALMA SOLA
TRACE CDD
3434 COLWELL AVE STE 200
TAMPA FL 33614-8390

RE: 4095 OVERTURE CIR # GATE

Dear Valued Customer:

Please be advised the Florida Public Service Commission recently amended interest rates on deposits to be in-line with current market rates. Therefore, as of July 26, 2012, deposits currently earning 6% interest will earn 2% and deposits currently earning 7% interest will earn 3%.

For information about our deposit policies, visit www.FPL.com/businessdeposits. You can also log in to your account at www.FPL.com for information about your deposit. Your deposit amount will be located in the "Account Information" area, and if you click on "Learn More," you can view the interest rate that you are receiving.

We truly value your business and are committed to providing you with affordable, reliable and clean energy now and in the future. If you have any questions, please call our Business Care Center at (800) 375-2434.

Sincerely,

FPL Customer Service

USEFUL TELEPHONE NUMBERS



Hopping Green & Sams

Attorneys and Counselors

119 S. Monroe Street, Ste. 300
P.O. Box 6526
Tallahassee, FL 32314
850.222.7500

===== STATEMENT =====

July 19, 2012

Palma Sola Trace Community Development District
c/o Accounts Payable
3434 Colwell Avenue
Suite 200
Tampa, FL 33614

Bill Number 66060
Billed through 06/30/2012

General Counsel/Monthly Meeting

PALMA 00001 JLE

FOR PROFESSIONAL SERVICES RENDERED

06/04/12	JLE	Confer with Cox regarding assessment question; analyze issues regarding the same.	0.40 hrs
06/05/12	JLE	Confer with Kennedy regarding audit update.	0.20 hrs
06/16/12	JLE	Follow-up from May meeting; analyze property records regarding real property question raised by Board Supervisor; prepare for Board meeting.	1.10 hrs
06/19/12	JLE	Analyze issue regarding perimeter wall; confer with Cox and Board Supervisor regarding the same.	0.20 hrs
06/22/12	KEM	Prepare appropriation resolution, assessment resolution and budget notice.	0.30 hrs
06/28/12	JLE	Confer with Cox regarding Board meeting; prepare for, travel to and from, and attend Board meeting.	3.90 hrs
Total fees for this matter			\$1,487.50

DISBURSEMENTS

Copying Charges	0.50
Long Distance	1.50
Travel	92.63
Total disbursements for this matter	\$94.63

MATTER SUMMARY

Earlywine, Jere L.	5.80 hrs	250 /hr	\$1,450.00
Ibarra, Katherine E. - Paralegal	0.30 hrs	125 /hr	\$37.50

TOTAL FEES	\$1,487.50
TOTAL DISBURSEMENTS	\$94.63

TOTAL CHARGES FOR THIS MATTER **\$1,582.13**

BILLING SUMMARY

Earlywine, Jere L.	5.80 hrs	250 /hr	\$1,450.00
Ibarra, Katherine E. - Paralegal	0.30 hrs	125 /hr	\$37.50
	TOTAL FEES		\$1,487.50
	TOTAL DISBURSEMENTS		\$94.63
TOTAL CHARGES FOR THIS BILL			\$1,582.13

Please include the bill number on your check.

RECEIVED

Date Paid: 8/9/12
 Date Entered: JUL 26 2012
 Paid 001 of 51400.00 3107

Hopping Green & Sams

Attorneys and Counselors

119 S. Monroe Street, Ste. 300
P.O. Box 6526
Tallahassee, FL 32314
850.222.7500

===== STATEMENT =====

August 13, 2012

Palma Sola Trace Community Development District
c/o Accounts Payable
3434 Colwell Avenue
Suite 200
Tampa, FL 33614

Bill Number 66407
Billed through 07/31/2012

General Counsel/Monthly Meeting

PALMA 00001 JLE

FOR PROFESSIONAL SERVICES RENDERED

07/02/12	JLE	Confer with Board Supervisors regarding ownership map; review and revise budget notice and resolutions; confer with District Manager regarding the same; review and revise construction administration agreement, and attachment thereto, as well as JC Pipeline contract; confer with District Staff regarding the same; analyze statutes and rules regarding procurement of engineering services; prepare RFQ notice for engineering services; confer with Cox regarding the same; review and revise contract documents based on comments from Schappacher; prepare draft letter regarding deferred costs; review numerous historic documents governing the same; confer with Kennedy and Cox regarding the same.	8.20 hrs
07/02/12	KEM	Prepare construction agreement; research status of election candidates.	0.90 hrs
07/09/12	JLE	Confer with Cox regarding vacancy resolution.	0.10 hrs
07/09/12	KEM	Prepare resolution declaring board vacancy.	0.20 hrs
07/10/12	JLE	Review changes to contract and correspondence from Schappacher; confer with Schappacher regarding the same.	0.20 hrs
Total fees for this matter			\$2,262.50

DISBURSEMENTS

Long Distance	0.06
Total disbursements for this matter	\$0.06

MATTER SUMMARY

Earlywine, Jere L.	8.50 hrs	250 /hr	\$2,125.00
Ibarra, Katherine E. - Paralegal	1.10 hrs	125 /hr	\$137.50

TOTAL FEES	\$2,262.50
TOTAL DISBURSEMENTS	\$0.06

TOTAL CHARGES FOR THIS MATTER

\$2,262.56

BILLING SUMMARY

Earlywine, Jere L.	8.50 hrs	250 /hr	\$2,125.00
Ibarra, Katherine E. - Paralegal	1.10 hrs	125 /hr	\$137.50
TOTAL FEES			\$2,262.50
TOTAL DISBURSEMENTS			\$0.06
TOTAL CHARGES FOR THIS BILL			\$2,262.56

Please include the bill number on your check.

RECEIVED
AUG 26 2012

Case filed Sizzotta & Co., Inc.
 Bill approval gpl Date 8/29/12
 Bill entered AUG 28 2012
 Bill # 001 of 51400 # 3107



~~XXXXXXXXXXXXX
XXXXXXXXXXXXX BRADENTON FL 34203 (941) 322-1584
XXXXXXXXXXXXX~~

NEW ADDRESS: 16101 MANESS ROAD, SARASOTA, FL 34240
PHONE & FAX ... 941-322-1584

7-25-12

INV NO: 2012-0725-06

TO: PALMA SOLA TRACE CDD
3434 COLWELL AVENUE SUITE 200
TAMPA FL 33614

PROJECT: PALMA SOLA TRACE
RAINFOREST COURT - REMODEL JUNCTION BOX

BILLING FOR WORK COMPLETED PER APPROVED PROPOSAL DATED 6-28-12:

AMOUNT DUE: \$4380.00

THANK YOU!

AUG 02 2012

Can Rec'd Post Office
DW Account Bar Date 8/8/12
Date Due: AUG 07 2012
Fund 001 53800.00, 4785
Check # _____

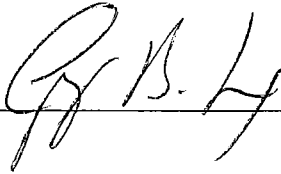
**PALMA SOLA TRACE COMMUNITY DEVELOPMENT DISTRICT
SUPERVISOR PAY REQUEST**

MEETING DATE: August 23, 2012

Name of Board Supervisor	Check if present	Check if to be paid
Mac McCraw	✓	
* Peter Gelman*	✓	compensated
Michelle Campbell	—	
* James Fleming*	✓	compensated
Dutch Neuweiler	—	

*Supervisors who are paid

District Manager



RECEIVED

Date Rec'd Rizzetta & Co., Inc. AUG 24 2012

D/M approval gl Date 8/24/12

Date entered AUG 28 2012

Fund 001 6151100 001101

Check # _____

RIZZETTA & COMPANY, INC.

3434 Colwell Avenue
 Suite 200
 Tampa, FL 33614

Invoice

DATE	INVOICE NO.
8/1/2012	14237

BILL TO
PALMA SOLA TRACE COMMUNITY DEVELOPMENT DISTRICT 3434 Colwell Avenue, Suite 200 Tampa, Florida 33614

TERMS	PROJECT
Due Upon Rec't	390 - CDD

ITEM	DESCRIPTION	QTY	RATE	AMOUNT
	PROFESSIONAL FEES:			
DM	District Management Services		1,562.50	1,562.50
ADMIN	Administrative Services		520.83	520.83
ACTG	Accounting Services		1,250.00	1,250.00
FC	Financial Consulting Services		333.33	333.33
	Services for the period August 1, 2012 through August 31, 2012			

RECEIVED

AUG 7 2012

Date Rec'd Rizzetta & Co. Inc. _____
 MM approval *lpe* Date *8/8/12*
 Date entered *AUG 07 2012*
 Fund *001* 31 *51300* 3101
 3100
 3201
 3111

Total	\$3,666.66
--------------	-------------------

Schappacher Engineering, LLC

P.O. Box 21203
 Bradenton, FL 34204

Invoice

Date	Invoice #
8/5/2012	S13255

Bill To
Palma Sola Trace CDD Attn: Accounts Payable 3434 Colwell Avenue, Suite 200 Tampa, FLorida 33614

Project Number	Terms	Project
S100035	Due on receipt ✓	Palma Sola Trace CDD

Serviced	Description	Quantity	Rate	Amount
7/20/2012	Lake 8 Junction Box Modification - Coordinate with Contractor and review completed work	1	500.00	500.00

RECEIVED
 8/15/12
 AUG 13 2012
 51300 3103

Make checks payable to Schappacher Engineering Thank you for your business	Total	\$500.00
---	--------------	----------

WEST BAY LANDSCAPE, INC.

6009 15th St. E.
 Bradenton, FL 34203
 941-753-8225

INVOICE NO.

30572

INVOICE

ACCT. NO: Palma Sola Trace C.D.D.
 SOLD TO: 3434 Colwell Avenue St#200
 Tampa, FL 33614

SHIP TO:

SALES NO.	PURCHASE ORDER NO.	SHIP VIA	COL	PPD	DATE SHIPPED	TERMS	INVOICE DATE	
Ron					8/1/2012		8/1/2012	
QTY. ORDERED	QTY. SHIPPED	BACK ORDERED	ITEM NO.	DESCRIPTION			UNIT PRICE	EXTENDED PRICE
1			Monthly Lawn Service Contract	Monthly Service			680.00	680.00

RECEIVED

Date Rec'd Rizzetta & Co., Inc.
 O/M approval *gr* Date *8/8/12*
 Date entered **AUG 07 2012**
 Fund **001** GI **53800.00** 4602

SALE AMOUNT

TAXABLE TOTAL
 SALES TAX
 FREIGHT
 TOTAL

\$680.00

Thank You

Blank Tab

PALMA SOLA TRACE COMMUNITY DEVELOPMENT DISTRICT

DISTRICT OFFICE • 3434 COLWELL AVENUE • SUITE 200 • TAMPA, FLORIDA 33614

Operation and Maintenance Expenditures September 2012 For Board Approval

Attached please find the check register listing the Operation and Maintenance expenditures paid from September 1, 2012 through September 30, 2012. This does not include expenditures previously approved by the Board.

The total items being presented: **\$15,869.64**

Approval of Expenditures:

_____ Chairman

_____ Vice Chairman

_____ Assistant Secretary

Palma Sola Trace Community Development District

Paid Operation & Maintenance Expenses

September 1, 2012 Through September 30, 2012

<u>Vendor Name</u>	<u>Check Number</u>	<u>Invoice Number</u>	<u>Invoice Description</u>	<u>Invoice Amount</u>
Aquagenix	2099	1170328	Aquatic Service 09/12	\$ 850.00
Bradenton Herald	2097	Order #052099016	Acct # 001447100 Legal Advertising 08/12	\$ 403.20
Florida Power & Light Company	2098	21937-71157 08/12	3724 Summerwind Cir # GATE 08/12	\$ 8.72
Florida Power & Light Company	2096	75654-55537 08/12	3807 75th St W # ST LTS 08/12	\$ 720.64
Florida Power & Light Company	2098	84373-03152 08/12	4095 Overture Cir # GATE 08/12	\$ 24.88
Rizzetta & Company, Inc.	2095	14330	District Management Fees 09/12	\$ 3,666.66
Stahl Ross & Associates, Inc.	2100	19438	General/POL Liability Insurance 12/13	\$ 9,515.54
West Bay Landscape, Inc.	2101	31079	Monthly Lawn Service 09/12	\$ 680.00
Report Total				<u>\$ 15,869.64</u>



Remit To:

100 N Conahan Drive
 Hazleton, PA 18201
 904-262-2001 FAX 904-262-0010
 www.dbiservices.com/aquagenix

Please include our Invoice Number on your check

Invoice

Number
1170328

Date
01-SEP-12

Customer PO

Cust # 13801

Palma Sola Trace CDD
 c/o Rizzetta & Company, Inc.
 3434 Colwell Ave
 Tampa FL 33614

RECEIVED

SEP 4 2012

Referral.

Palma Sola Trace
 CDD

Quantity	Description	Unit Price	Amount
1	Aquatics Service	850.00	\$850.00
	<i>gn 9/12/12</i> SEP 11 2012 001 53800 4610		
		Subtotal	\$850.00
		Tax	\$0.00
TERMS -NET30: A Service Charge of 1 ½% Per Month is Charged on Past Due Accounts (Annual Rate 18%)		Total	\$850.00

Central Florida Branch Office
 St. Cloud, FL
 (407) 892-0136

Southeast Florida Branch Office
 Fort Lauderdale, FL
 (954) 943-5118

West Central Florida Branch Office
 Sarasota, FL
 (941) 371-8081

Southwest Florida Branch Office
 Ft. Myers, FL
 (239) 561-1420

West Palm/Treasure Coast Office
 West Palm Beach, FL
 (561) 881-1291

Tampa Bay Area Branch Office
 Tampa, FL
 (813) 627-8710

North Florida Branch Office
 Jacksonville, FL
 (904) 262-2001

Carolinas Branch Office
 Myrtle Beach, SC
 (843) 651-9220

BRADENTON HERALD

Manatee County's Newspaper since 1922

ADVERTISING INVOICE STATEMENT

PLEASE RETURN TOP PORTION WITH YOUR PAYMENT

P.O. Box 921
BRADENTON, FL 34206-0921

M
PAGE: 1

ACCOUNT: 001447100
PERIOD: 08/01/12 08/31/12 REP: 18

TERMS:
NET 20 DAYS

PALMA SOLA TRACE CDD
ATTN: ACCTS PAYABLE
3434 COLWELL AVE STE 200
TAMPA FL 33614

CURRENT BALANCE: \$403.20
PLEASE MAKE CHECK PAYABLE TO: AMOUNT
BRADENTON HERALD ENCLOSED

001447100 0000000000000000 000403201

REFERENCE NUMBER DATE STARTED	END DATE TIMES RUN	DESCRIPTION OR TAG LINE AD DIMENSION	RATE	SIZE	CHARGES OR CREDITS
BALANCE FORWARD					288.00
0482060034	08/20/12	PAYMENT THANK YOU			288.00-
T052099016 08/05/12	08/12/12 4	PALMA SOLA TRACE 1.0X 84.00L	COMMU	84.0L	403.20 403.20
		PREVIOUS AMOUNT OWED:	288.00		
		NEW CHARGES THIS PERIOD:	403.20		
		NEW TAXES THIS PERIOD:	.00		
		PAYMENT THIS PERIOD:	288.00		
		DEBIT ADJUSTMENTS THIS PERIOD:	.00		
		CREDIT ADJUSTMENTS THIS PERIOD:	.00		

BILLING INQUIREIES: 941-745-7069
AD SALES: CLASSIFIED 941-748-4400
AD SALES: RETAIL 941-748-0411, EST 7030

RECEIVED

SEP 17 2012
9/17/12
001 51300 4801

TOTAL AMOUNT IS DUE BY THE 20TH OF THE MONTH

\$403.20	\$0.00	\$0.00	\$0.00
CURRENT	OVER-30	OVER-60	OVER-90

Total Due: \$403.20

001447100
PALMA SOLA TRACE CDD

BRADENTON HERALD

Manatee County's Newspaper since 1922

102 MANATEE AVE W
P.O. BOX 921
BRADENTON, FL 34206-0921

THANK YOU FOR PLACING
YOUR ADS WITH US

Florida Power & Light Company
 PO Box 025576
 Miami, FL 33102

5205219377115702780000000

Please request changes on the back.
 Notes on the front will not be detected.

B 5,8 5205 0



AUTO **C0 1459
 1 147141

PALMA SOLA
 TRACE CDD
 3434 COLWELL AVE STE 200
 TAMPA FL 33614-8390

Make check payable to FPL in U.S. funds
 and mail along with this coupon to:

FPL
 GENERAL MAIL FACILITY
 MIAMI FL 33188-0001



Account number	Total amount you owe	New charges due by	Amount enclosed
21937-71157	\$8.72	Sep 28 2012	\$

Your electric statement

Account number: 21937-71157

For: Aug 07 2012 to Sep 07 2012 (31 days)

Statement date: Sep 07 2012
 Next meter reading: Oct 08 2012

Customer name: PALMA SOLA
 Service address: 3724 SUMMERWIND CIR # GATE

Amount of your last bill	Payments (-)	Additional activity (+ or -)	Balance before new charges (=)	New charges (+)	Total amount you owe (=)	New charges due by
8.63	8.63 CR	0.00	0.00	8.72	\$8.72	Sep 28 2012

Meter reading - Meter 7C83032

Current reading 00797
 Previous reading - 00785
 kWh used 12

Amount of your last bill 8.63
 Payment received - Thank you 8.63CR
 Balance before new charges \$0.00

Energy usage

	Last Year	This Year
kWh this month	22	12
Service days	34	31
kWh per day	1	0

New charges (Rate: GS-1 GENERAL SVC NON-DEMAND / BUSINESS)

Electric service amount 8.01**
 Storm charge 0.01
 Gross receipts tax 0.21
 Franchise charge 0.49
 Total new charges \$8.72

****The electric service amount includes the following charges:**

Customer charge: \$6.89
 Fuel: \$0.44
 Non-fuel: \$0.68
 (\$0.036880 per kWh)
 (\$0.056620 per kWh)

Total amount you owe

- Payment received after **November 28, 2012** is considered **LATE**; a late payment charge of 1% will apply.
 - Minor adjustments to the storm charges were approved by the Public Service Commission and will apply to your bill beginning Oct. 1. For more details, visit www.FPL.com/rates.

RECEIVED

SEP 17 2012

001 53100 4301

Florida Power & Light Company
 PO Box 025576
 Miami, FL 33102

Please have your account number ready when contacting FPL.
 Customer service: 1-800-375-2434
 Outside Florida: 1-800-226-3545
 To report power outages: 1-800-4OUTAGE (468-8243)
 Hearing/speech impaired: 711 (Relay Service)
 Online at: www.FPL.com

Florida Power & Light Company
 PO Box 025576
 Miami, FL 33102

/ 27

5202756545553714602700000

Please request changes on the back.
 Notes on the front will not be detected.

A A 5,8

5202 1



AUTO **C0 1459
 1 144218

PALMA SOLA TRACE COMM DEV
 DISTRICT
 3434 COLWELL AVE STE 200
 TAMPA FL 33614-8390

Make check payable to FPL in U.S. funds
 and mail along with this coupon to:

FPL
 GENERAL MAIL FACILITY
 MIAMI FL 33188-0001



Account number	Total amount you owe	New charges due by	Amount enclosed
75654-55537	\$720.64	Sep 25 2012	\$

Your electric statement

Account number: 75654-55537

For: Aug 02 2012 to Sep 04 2012 (33 days)
 Customer name: PALMA SOLA TRACE COMM DEV
 Service address: 3807 75TH ST W # ST LTS

Statement date: Sep 04 2012
 Next bill date: Oct 02 2012

Amount of your last bill	Payments (-)	Additional activity (+ or -)	Balance before new charges (=)	New charges (+)	Total amount you owe (=)	New charges due by
720.64	720.64 CR	0.00	0.00	720.64	\$720.64	Sep 25 2012

Total kWh used 9991

Energy usage

	Last Year	This Year
kWh this month	9991	9991
Service days	31	33
kWh per day	322	303

Amount of your last bill	720.64
Payment received - Thank you	720.64 CR
Balance before new charges	\$0.00

New charges (Rate: SL-1 STREET LIGHTING SERVICE)

Electric service amount	626.99**
Storm charge	75.63
Gross receipts tax	18.02
Total new charges	\$720.64

**The electric service amount includes the following charges:
 Non-fuel energy charge:

Fuel charge: \$0.030380 per kWh
 \$0.032400 per kWh

Total amount you owe \$720.64

- Payment received after **November 26, 2012** is considered **LATE**; a late payment charge of **1%** will apply.
- Charges and energy usage are based on the facilities contracted. Facility, energy and fuel costs are available upon request.
- Minor adjustments to the storm charges were approved by the Public Service Commission and will apply to your bill beginning Oct. 1. For more details, visit www.FPL.com/rates.

Please have your account number ready when contacting FPL.
 Customer service: 1-800-375-2434
 Outside Florida: 1-800-226-3545
 To report power outages: 1-800-4OUTAGE (468-8243)
 Hearing/speech impaired: 711 (Relay Service)
 Online at: www.FPL.com

Florida Power & Light Company
 PO Box 025576
 Miami, FL 33102



2 144218

Detail of Rate Schedule Charges for
 Street Lights

5202 000326

PALMA SOLA TRACE COMM DEV
 DISTRICT
 3434 COLWELL AVE STE 200
 TAMPA FL 33614-8390

Account Number: 75654-55537
 Service From: 08-02-2012
 Service To: 09-04-2012
 Service Days: 33
 KWH/Day: 303

Service Address: 3807 75TH ST W # ST LTS, BRADENTON FL 34209

COMPONENT CODE	WATTS	LUMENS	* OWNER/ MAINT	QUANTITY	RATE/ UNIT	KWH USED	AMOUNT	
103 KWH Energy			E	97	2.800000	9,991	271.60	
RECEIVED SEP 07 2012 001 53100 4307								
Energy sub total								271.60
Sub total							9,991	271.60
Energy conservation cost recovery								14.89
Capacity payment recovery charge								12.89
Environmental cost recovery charge								3.90
Storm charge								75.63
Fuel charge								323.71
Electric service amount								702.62
Gross receipts tax								18.02
Total							9,991	720.64

* F - FPL OWNS & MAINTAINS E - CUSTOMER OWNS & MAINTAINS R - CUSTOMER OWNS, FPL RELAMPS

Florida Power & Light Company
 PO Box 025576
 Miami, FL 33102

2 147141

/ 27

520584373031523884200000

Please request changes on the back.
 Notes on the front will not be detected.

B 5,8 5205 3

PALMA SOLA
 TRACE CDD
 3434 COLWELL AVE STE 200
 TAMPA FL 33614-8390

Make check payable to FPL in U.S. funds
 and mail along with this coupon to:

FPL
 GENERAL MAIL FACILITY
 MIAMI FL 33188-0001

Account number	Total amount you owe	New charges due by	Amount enclosed
84373-03152	\$24.88	Sep 28 2012	\$

Your electric statement

Account number: 84373-03152

For: Aug 07 2012 to Sep 07 2012 (31 days)

Customer name: PALMA SOLA
 Service address: 4095 OVERTURE CIR # GATE

Statement date: Sep 07 2012
 Next meter reading: Oct 08 2012

Amount of your last bill	Payments (-)	Additional activity (+ or -)	Balance before new charges (=)	New charges (+)	Total amount you owe (=)	New charges due by
23.22	23.22 CR	0.00	0.00	24.88	\$24.88	Sep 28 2012

Meter reading - Meter 7C83024

Current reading	06865	Amount of your last bill	23.22
Previous reading	- 06696	Payment received - Thank you	23.22 CR
kWh used	169	Balance before new charges	\$0.00

Energy usage

	Last Year	This Year
kWh this month	187	169
Service days	34	31
kWh per day	6	5

New charges (Rate: GS-1 GENERAL SVC NON-DEMAND / BUSINESS)

Electric service amount	22.70**
Storm charge	0.18
Gross receipts tax	0.59
Franchise charge	1.41
Total new charges	\$24.88

****The electric service amount includes the following charges:**

Customer charge:	\$6.89
Fuel:	\$6.23
(\$0.036880 per kWh)	
Non-fuel:	\$9.58
(\$0.056620 per kWh)	

Total amount you owe \$24.88

- Payment received after **November 28, 2012** is considered **LATE**; a late payment charge of 1% will apply.
- Minor adjustments to the storm charges were approved by the Public Service Commission and will apply to your bill beginning Oct. 1. For more details, visit www.FPL.com/rates.

RECEIVED

Date Rec'd Rizzolia & Co., Inc. SEP 13 2012

O/M approval [Signature] Date 9/13/12

Date entered SEP 17 2012

Fund 001 GL53100.00 4301

Check # _____

Florida Power & Light Company
 PO Box 025576
 Miami, FL 33102

Please have your account number ready when contacting FPL.
 Customer service: 1-800-375-2434
 Outside Florida: 1-800-226-3545
 To report power outages: 1-800-4OUTAGE (468-8243)
 Hearing/speech impaired: 711 (Relay Service)
 Online at: www.FPL.com

DIZZETTA & COMPANY, INC.

3434 Colwell Avenue

Suite 200

Tampa, FL 33614

Invoice

DATE	INVOICE NO.
9/1/2012	14330

BILL TO
PALMA SOLA TRACE COMMUNITY DEVELOPMENT DISTRICT 3434 Colwell Avenue, Suite 200 Tampa, Florida 33614

TERMS	PROJECT
Due Upon Rec't	390 - CDD

ITEM	DESCRIPTION	QTY	RATE	AMOUNT
	PROFESSIONAL FEES:			
DM	District Management Services		1,562.50	1,562.50
ADMIN	Administrative Services		520.83	520.83
ACTG	Accounting Services		1,250.00	1,250.00
FC	Financial Consulting Services		333.33	333.33
	Services for the period September 1, 2012 through September 30, 2012			

RECEIVED

AUG 28 2012

SEP 04 2012

001 51300 3101
3100
3201
3111

Total

\$3,666.66



Stahl Ross & Associates Inc.
 3939 Tampa Road
 Oldsmar, FL 34677
 Phone : 727-784-8554 Fax : 727-789-2823

INVOICE # 19438		Page 1
ACCOUNT NO. PALMA-2	EXP. DATE SG	DATE 09/20/12
Commercial Package		
POLICY #		
COMPANY Tower Hill Insurance Group, Inc		
EFFECTIVE 10/01/12	EXPIRATION 10/01/13	BALANCE DUE ON 09/28/12

Palma Sola Trace CDD
 c/o Rizzetta & Co
 3434 Colwell Avenue, #200
 Tampa, FL 33614

Item #	Eff. Date	Trm	Type	Description	Amount
351255	10/01/12	MEM	PCKG	Package	\$ 6,526.44 <i>gw. lia</i>
351256	10/01/12	MEM	PCKG	B&M	\$ 254.00 <i>prop by</i>
351257	10/01/12	MEM	PCKG	POL	\$ 2,735.10
Invoice Balance:					\$ 9,515.54

RECEIVED
 SEP 20 2012

Date Rec'd Rizzetta & Co., Inc. _____
 D/M approval ge Date 9/25/12
 Date entered SEP 24 2012
 Fund 001 GL 1550000
 Check # _____

Please make check payable to Stahl & Associates, and remit directly to our office for processing.

WEST BAY LANDSCAPE, INC.

6009 15th St. E.
Bradenton, FL 34203
941-753-8225

INVOICE NO.

31079

INVOICE

ACCT. NO: Palma Sola Trace C.D.D.
SOLD TO: 3434 Colwell Avenue St#200
Tampa, FL 33614

SHIP TO:

SALES NO.	PURCHASE ORDER NO.	SHIP VIA	COL	PPD	DATE SHIPPED	TERMS	INVOICE DATE
Ron					9/1/2012		9/1/2012

QTY. ORDERED	QTY. SHIPPED	BACK ORDERED	ITEM NO.	DESCRIPTION	UNIT PRICE	EXTENDED PRICE
--------------	--------------	--------------	----------	-------------	------------	----------------

1			Monthly Lawn Service Contract	Monthly Service	680.00	680.00
---	--	--	-------------------------------	-----------------	--------	--------

RECEIVED
AUG 28 2012

Order # 001
C/M approved *Be* Date *9/5/12*
SEP 04 2012
53800 4602

Thank You

SALE AMOUNT	
TAXABLE TOTAL	
SALES TAX	
FREIGHT	
TOTAL	\$680.00

Tab 3



Aquagenix

Managing Your Liquid Assets

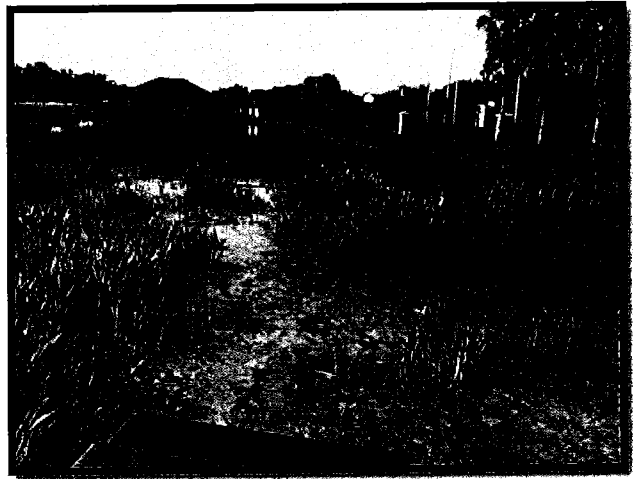
Date of Service: 8/29/12 & 9/10/12

Date of Inspection: 9/10/12

Lake #1 – 6/8/12



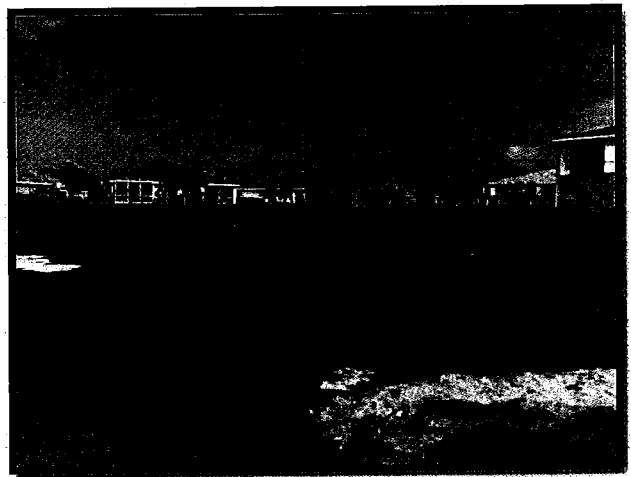
Lake #1 – 9/10/12



Lake #2 – 6/8/12



Lake #2 – 9/10/12





Aquagenix

Managing Your Liquid Assets

Lake #3 - 6/8/12



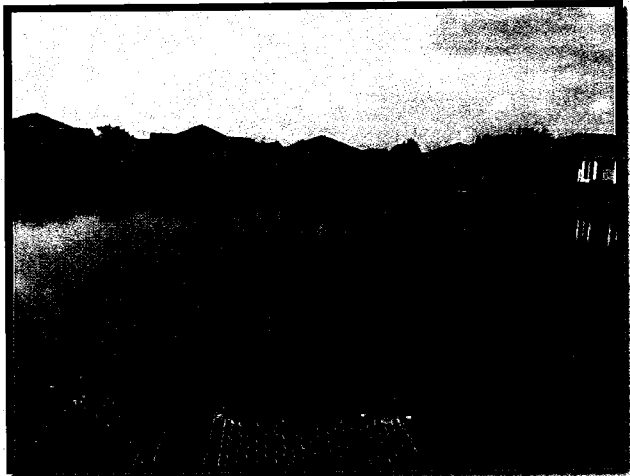
Lake #3 - 9/10/12



Lake #4 - 6/8/12



Lake #4 - 9/10/12

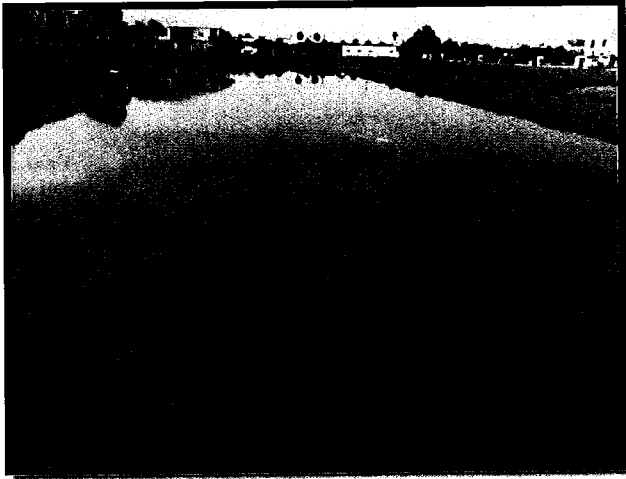




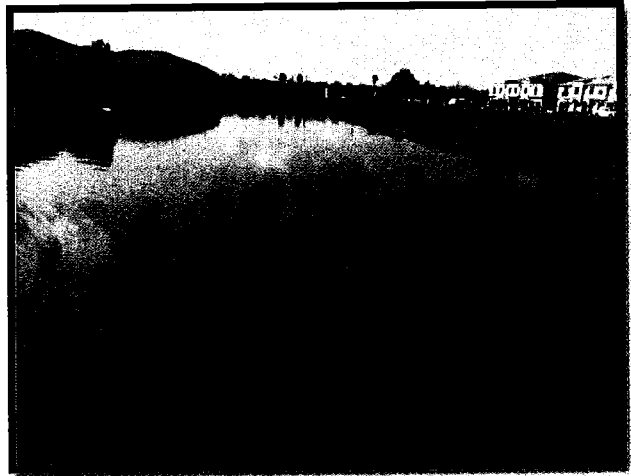
Aquagenix

Managing Your Liquid Assets

Lake #5 – 6/8/12



Lake #5 – 9/10/12



Lake #6 – 6/8/12



Lake #6 – 9/10/12

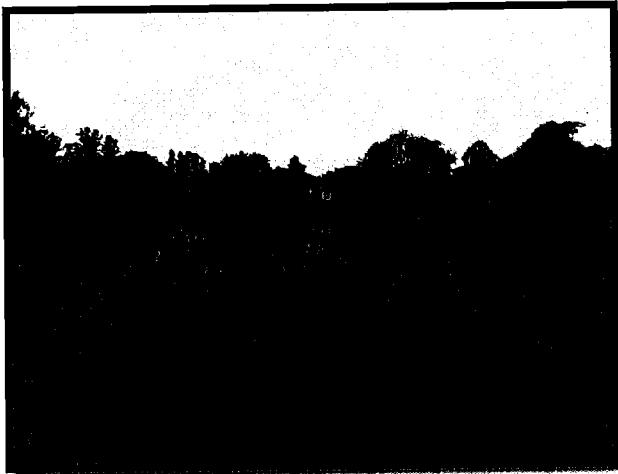




Aquagenix

Managing Your Liquid Assets

Lake #7 - 6/8/12



Lake #7 - 9/10/12



Lake #8 - 6/8/12



Lake #8 - 9/10/12

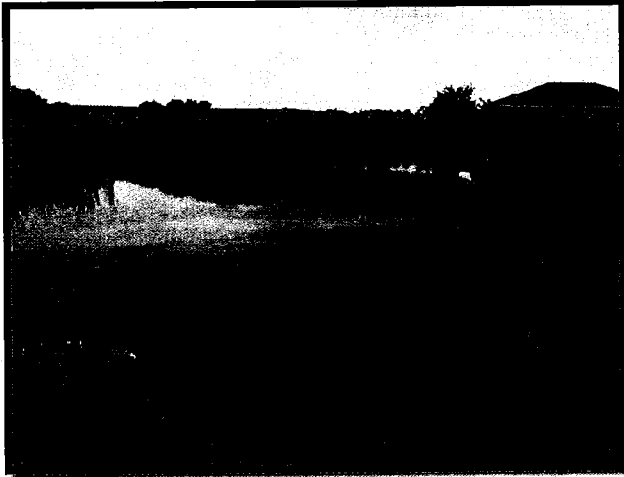




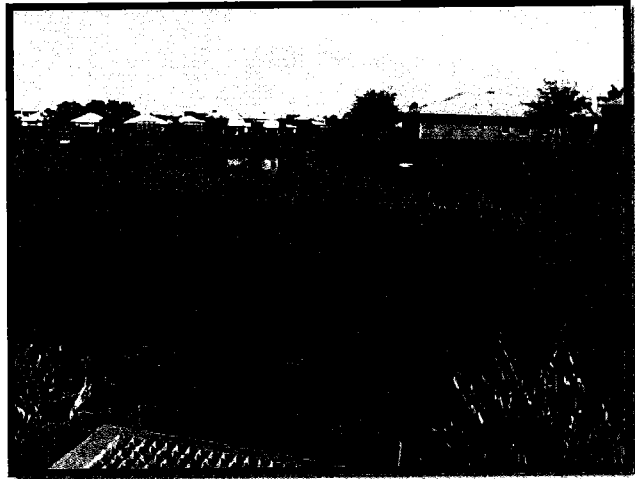
Aquagenix

Managing Your Liquid Assets

Lake #9 - 6/8/12



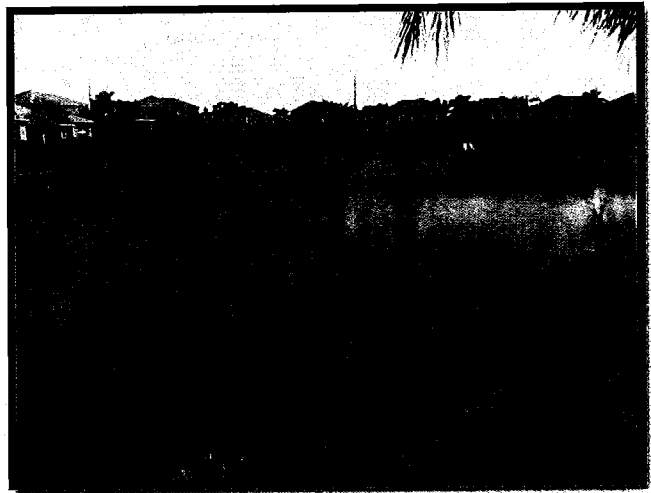
Lake #9 - 9/10/12



Lake #10 - 6/8/12



Lake #10 - 9/10/12





Aquagenix

Managing Your Liquid Assets

Lake #1 – Treated for Algae & Floating Vegetation. Most Algae was in the shelf, also Duckweed.

Lake #2 – Treated band of Green Algae along the sides.

Lake #3 – Treated band of Green Algae along the sides.

Lake #4 – Treated band of Green Algae along the sides.

Lake #5 – Treated band of Green Algae along the sides.

Lake #6 – Treated for Algae & Floating Vegetation. Most Algae was in the shelf, also Duckweed.

Lake #7 – Treated band of Green Algae along the sides.

Lake #8 – Treated band of Green Algae along the sides.

Lake #9 – Treated for Algae & Floating Vegetation. Most Algae was in the shelf, also Duckweed.

Lake #10 – Treated band of Green Algae along the sides.

Treatment on 9/10/12 may take 10 to 14 days.

If you have any questions or concerns, please feel free to contact me.

Sincerely,

Mike Kaighin
Aquagenix
Branch Manager